

Mechanical Time Switch - 24-Hour 120V Mechanical Time Switch, SPST, Mechanism Only  
Item T101M



PRODUCT DESCRIPTION

Heavy-duty mechanical time switches control a single load.

FEATURES

- ▶ Highest motor load ratings in the industry
- ▶ 12 ON/OFF operations per day
- ▶ One ON and one OFF tripper included
- ▶ Can be installed in most Intermatic enclosures
- ▶ Available with pool heater protection
- ▶ Teeter-type terminals for multiple load connections

Not for use with sunlamps, saunas, or loads that could cause personal injury if timed incorrectly.

APPLICATIONS

- ▶ Timing/Scheduling ON/OFF
- ▶ Indoor Lighting Control

TECHNICAL DATA

Control Specifications	
Minimum ON/OFF Times	1 hour
Maximum ON/OFF Operations	12
Skipper Wheel	Not Included
Has Manual Override	Yes
Application Compatibilities	LED; HID
Dimensions	
Wire Size Min	#14 AWG
Wire Size Max	#8 AWG
Electrical Specifications	
Heater Control Output	10 A, 250 VAC MAX, 60 Hz
Input Voltage Range(s)	120 VAC, 60 Hz
Number of Circuits	1
Switch Type	SPST
Maximum Power Consumption (W)	3 W
Environmental Specifications	
Temperature (operation)	-40°C..54°C
General	
Model Number	T101M
Description	24-Hour 120V Mechanical Time Switch, SPST, Mechanism Only
UPC Code	078275000230
Brand	Intermatic
Country of Origin (Intermatic)	MEXICO
Warranty Period	1-Year limited

Load Ratings	
Tungsten Range(s)	40 A, 120-240 VAC, 60 Hz
Electronic Ballast	16 A
Electronic Ballast Load Ratings Ranges	16 A, 120 VAC
Inductive	40 A, 240 VAC, 60 Hz; 40 A, 208 VAC, 60 Hz; 40 A, 120 VAC, 60 Hz
Motor	2 HP, 24 FLA @ 120 VAC, 60 Hz;5 HP, 28 FLA @ 240 VAC, 60 Hz
Resistive Load Ratings Ranges	40 A, 120-240 VAC, 60 Hz
Inductive Load Ratings Ranges	40 A, 120-240 VAC, 60 Hz
Pilot Duty Load Ratings Ranges	1000 VA, 120-240 VAC, 60 Hz

Mechanical Specifications	
Enclosure Type	N/A - Mechanism only
Number of Trippers Included	1 ON/1 OFF

Packaging	
Shipping Weight (lbs)	1.297
Unit Carton Height (in)	8.25

Standards and Certifications	
UL Certification	cULus
CSA Certification	cCSAus
Other Certifications and Compatibilities	LED
UL File Number	UL917
CSA File Number	C22.2-177; LR3730
California Proposition 65	Lead

ACCESSORIES



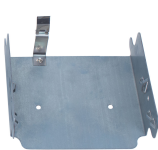
156T1978AMX  
1 Set of ON/OFF Trippers for T100, T7000, and WH40



156T1978A  
Extra/replacement trippers 1 ON and 1 OFF



156T1978AD12  
12 Pack of 156T1978A Trippers for T100, T7000, and WH40



22T338GR  
Mounting Bracket for Intermatic Standardized Timer Mechanisms

Product  
Image  
Not  
Available

156T1957A  
Skipper Screws (3 per package)



2T2040GA  
Case-Indoor, Type 1 Metal, Gray